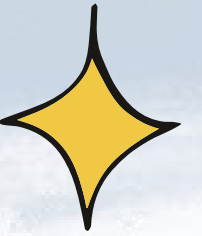


**A/MFA**

PRESENTS



# MADELINE'S CHRISTMAS



BASED ON THE BOOKS BY

**LUDWIG BEMELMANS**

BOOK AND LYRICS BY

**JENNIFER KIRKEBY**

MUSIC BY

**SHIRLEY MIER**



PRODUCED BY SPECIAL ARRANGEMENT WITH  
THE DRAMATIC PUBLISHING COMPANY OF WOODSTOCK, ILLINOIS

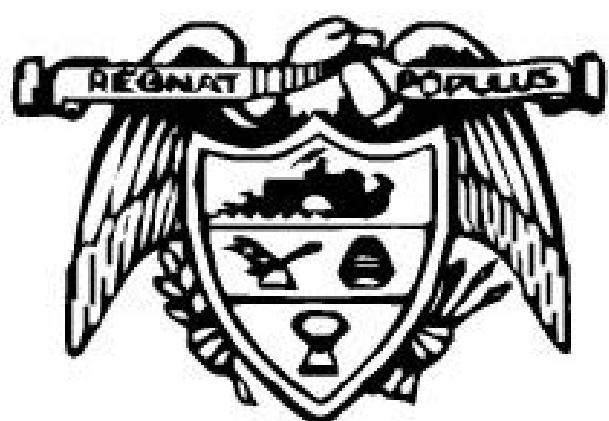


# hats off

TO OUR SPONSORS

CHILDREN'S THEATRE AND PERFORMING ARTS  
PROGRAMS ARE SUPPORTED BY THE SHUBERT  
FOUNDATION AND THE ALICE L. WALTON  
FOUNDATION.

Arkansas Democrat



Gazette



Arkansas  
**BlueCross**  
**BlueShield**

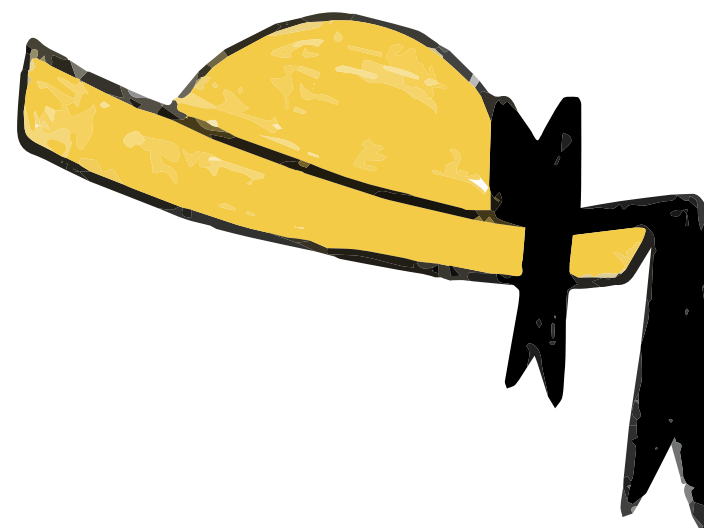
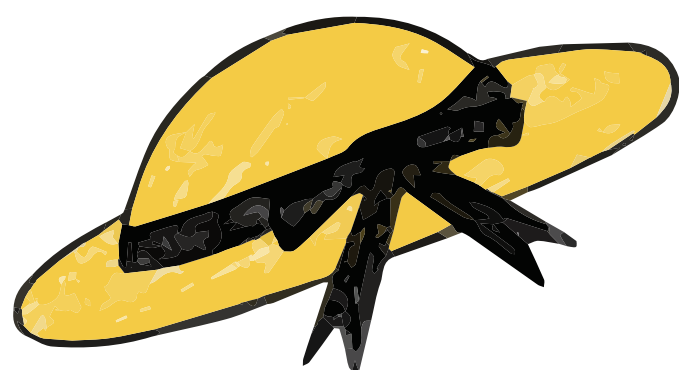
**STEPHANIE AND  
KENNY GUNDERMAN**

---

**HODGE ORTHODONTICS**

**REBSAMEN FUND**

**DR. LOREN BARTOLE,  
'FAMILY FOOT CARE'**



# about the show



"Sometimes the most wonderful things can happen. Especially at Christmastime."



Between visits to the Eiffel Tower and the Paris Zoo, Madeline and her friends embark on a high-flying journey across Paris in this charming musical adaptation of Ludwig Bemelmans's classic tale.

**RUNNING TIME: 60 MINUTES**

AUDIO DESCRIPTION FOR SATURDAY, DECEMBER 14 AT 10:30 AM PROVIDED BY CREATIVE DESCRIPTIONS  
ASL INTERPRETATION FOR SATURDAY, DECEMBER 14 AT 2:00 PM PROVIDED BY COMMUNICATIONS PLUS

## note from the director

"Theatre for Young Audiences is both one of the most challenging and rewarding forms of theatre. The young audience members are refreshingly honest; their reactions are genuine, unfiltered by societal expectations. You can instantly tell whether you're captivating them or losing their interest! I feel incredibly honored to collaborate with our talented local theatre professionals and some of the finest young actors from our community to bring this enchanting story to life for an audience that truly knows what they love."



Liz McMath

**Liz McMath** joined AMFA in 2001 as an actor after earning a bachelor's in speech, theatre, and mass communications from the University of Central Arkansas. She has since contributed to the Children's Theatre as an actor, teacher, costumer, stage manager, puppeteer, and director. Recent credits include directing *The Very Hungry Caterpillar Show* at AMFA, voicing and puppeteering characters in *Blueberry's Clubhouse* on Arkansas PBS, directing episodes like "Getting the Jams Back Together" and "Shiver Me Timbers" on *Blueberry's Clubhouse*, and portraying Ms. Ruby in *Mystery League* on Arkansas PBS."

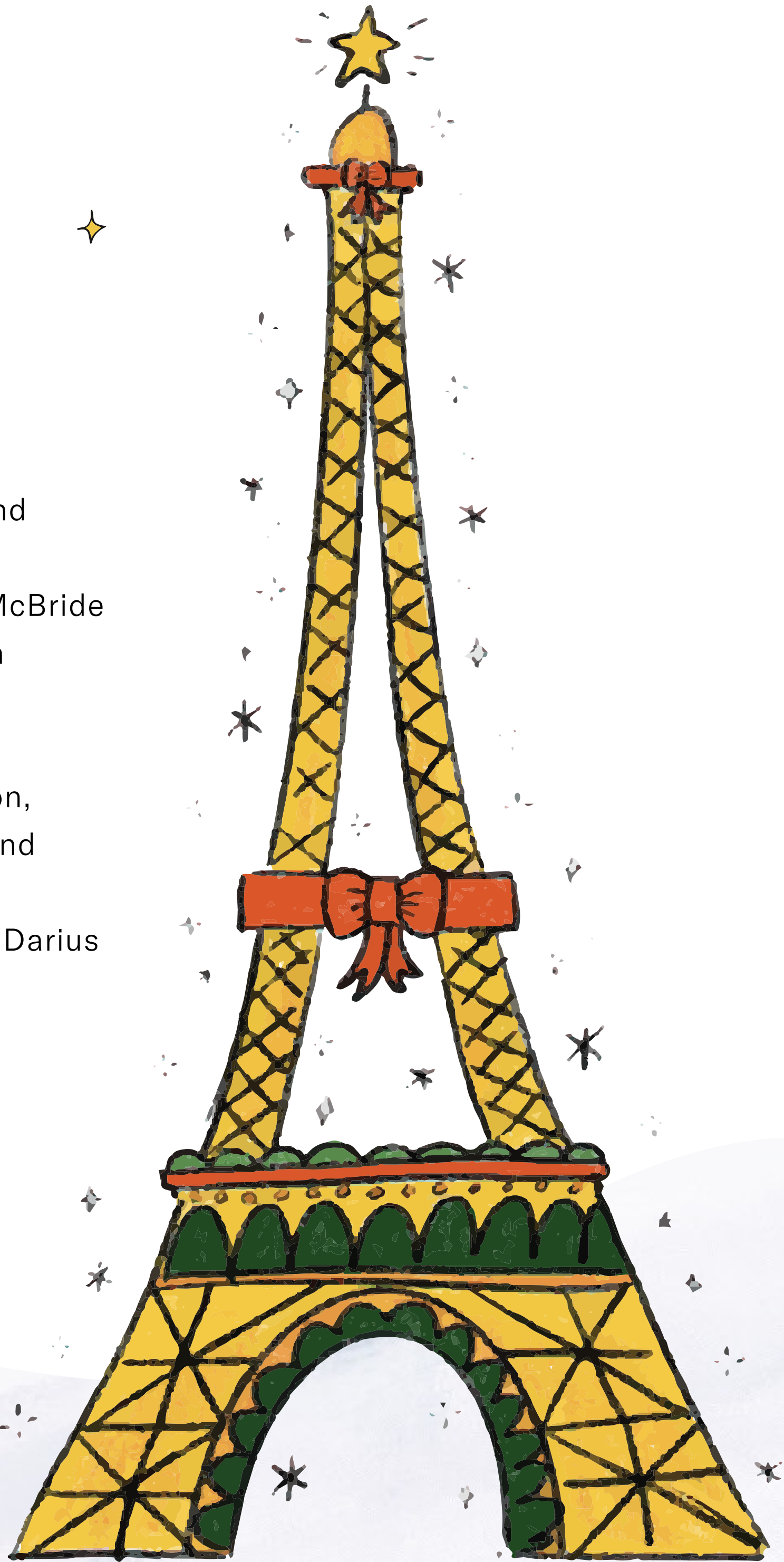
# meet the makers at AMFA

## AMFA CREATIVE TEAM

**Director** - Liz McMath  
**Music Director** - Chad Bradford  
**Choreographer** - Brandon Nichols  
**Scenic Design** - Drew Posey  
**Costume Design** - Erin Larkin  
**Lighting Design** - Andrew Shelton  
**Sound Design** - Luke Mitchell  
**Props Master** – Margo Gifford  
**Stage Manager** – Baleigh Almond

## AMFA PRODUCTION CREW

**Master Carpenter** - Alan Malcolm  
**Scenic Charge Artist** - Baleigh Almond  
**Carpenter** – Aaron Burnside  
**Costume Shop Manager** – Anthony McBride  
**Sound Board Operator** – Jessi Perren  
**Prop Assistant** – Laura Davis  
**Deck Manager** – Brandon Nichols  
**Youth Actor Mentors** – Lanie Carleson,  
Chloe Clement, LaDarius Jamerson, and  
Sarah Nichols  
**Backstage Crew** – Chloe Clement, LaDarius  
Jamerson, Sarah Nichols



## about the playwright



Jennifer Kirkeby is an actress, playwright, and children's writer who adapted *Madeline's Christmas*, based on Ludwig Bemelmans' book, along with several other children's favorites like *Llama Llama Red Pajama*, *The Paperbag Princess*, and *Click, Clack, Moo: Cows That Type*. Her original plays include *Midlife Madness* and *Eyes Wide Open*, and her 10-minute play *The Glass House* has won multiple awards. Kirkeby's work is published by Dramatic Publishing and Samuel French, and she's an active member of The Dramatists Guild, the Playwrights' Center, and AFTRA.

## about the author

Ludwig Bemelmans was a painter, illustrator, and beloved writer of the Madeline series. Born in Austria and moving to the U.S. in 1914, he made New York and Paris his homes. His first Madeline book, published in 1939, became a classic, earning a Caldecott Honor, with *Madeline's Rescue* winning the Caldecott Medal in 1953. Today, the Madeline stories remain cherished by children and adults alike.



## about the composer



Dr. Shirley Mier is a composer, music director, and educator in the Twin Cities, creating music for theater, educational settings, and concerts. She's written children's musicals, scores for Shakespeare, and concert band pieces, with her award-winning work *Theme and Deviations for Band* performed at Carnegie Hall. Dr. Mier holds degrees from Grinnell College and the University of Minnesota and is on the music faculty at Century College. She's also a member of ASCAP, the American Composers Forum, and the Dramatists Guild.

# meet the cast



**Brielle Buffington (Madeline)**, a 4th grader, is thrilled to join this cast. She recently played Flounder in *The Little Mermaid* at school and appeared in *Mixed Emotions Vol. 2*.



**Jamie Schildknecht (Madeline)**, a 5th grader at Fulbright Elementary, joins the cast after attending AMFA's theater camps. Jamie also enjoys art, soccer, and swimming.



**Paige Carpenter (Miss Clavel)** is delighted to return to AMFA, having performed here since 2014. Favorite local roles include Trunchbull in *Matilda* and Judith in *Boeing Boeing*. She is also the Master Carpenter for Argenta Contemporary Theatre.



**Adrian Hinojosa (Harsha)** is excited to work again with AMFA, where he understudied for *Dragons Love Tacos*. A Henderson State University graduate, Adrian recently worked as a dresser for The Rep's summer stock season and teaches mime.



**Raha Kalantari (Kate)**, an 8th grader at LISA Academy West, began acting in 5th grade. Her past roles include parts in *Seussical The Musical* and *The Lost Chord*. She also loves tennis, volleyball, and animation.



**Dahlia Murphy (Dominique)**, a 6th grader, moved from California to Little Rock and has since performed in *The Lion King* and *101 Dalmatians*. She loves volleyball, making jewelry, and dancing.



**Olivia Padilla (Camille)**, an 8th grader at Christ Little Rock School, is excited for her first show with AMFA. She enjoys writing fiction, drawing, and singing.



**Adelaide Parrish (Amy)**, a 4th grader at Jefferson Elementary, has been active in theater since age 5 and studies modern and lyrical dance. When not performing, she enjoys sewing and singing.

# meet the cast



**Katherine Greer (Mrs. Murphy)** holds degrees in dance and theater from UA Little Rock. Her favorite credits include choreography for *Much Ado About Nothing* (Arkansas Shakespeare Theatre) and acting in *Dragons Love Tacos*, *A Chorus Line*, and *Machinal*.



**Aaron Burnside (Brun/Mouse)**, a Henderson State University graduate, is excited to perform in *Madeline's Christmas* with AMFA. A seasoned actor and scenic carpenter, Aaron's favorite role is Kenny in AMFA's *Flurffy and Friends*.



**Sydney Brasuell (Mary)**, a 4th grader at Jefferson Elementary, first appeared as herself in the Netflix documentary *Merpeople* and looks forward to many more performances.



**Charlotte Davis (Anne)**, a 3rd grader at Episcopal Collegiate School, is excited for her first performance with AMFA. She loves soccer, collecting playbills, baking, and playing with her dog, Louie.



**Madison Courage Fleck (Simone)** is happy to return to AMFA, where she last performed in *The Very Hungry Caterpillar*. Since her first *Madeline* audition in 2012, she has worked with The Rep, Red Curtain, and Argenta Contemporary Theatre.



**Caitlynn Howell (Juliette)** studied theater for three years, is passionate about performing, and is grateful to her family for supporting her dreams.



**Faith Jeffries (Amy)**, a 6th grader at Westwind School of Performing Arts, recently performed in *Cynthia's Place* at AMFA and *The Toymaker's Apprentice*. Faith also loves to dance!



**Mady Reyes (Daphne)**, a senior at Mount St. Mary Academy, is a Teen Advisory Board member and frequent volunteer at AMFA. She thanks her friends and family for their support.

# meet the cast



**Spencer Steward (Mary)**, a 7th grader at Westwind School for the Performing Arts, is excited to join the cast. Her favorite past roles include Deloris in *Sister Act Jr.* and *Dorothy in The Wiz*.



**Lily Townsend (Isabelle)**, a 7th grader at LISA Hybrid Academy, enjoys musical theater, ballet, French, and horseback riding. She is excited for her first AMFA appearance.



**Piper Wallace (Regine)** is thrilled to join AMFA. Favorite roles include Matilda in *Matilda the Musical* and Claire in *Disney+'s World's Best*. She loves nature and spending time with her animals.



**Chloe Clement (Understudy)**, a Little Rock native with a musical theater degree from Columbia College Chicago, is excited to be back with AMFA. She has toured with *Paw Patrol Live!* and performed with AMFA, The Rep, and Red Curtain Theater.



**LaDarius Lamar Jamerson (Understudy)** joins AMFA as a crew member and understudy. His recent credits include roles in *Chicago* and *Clybourne Park*. He thanks the cast and crew and wishes everyone a Merry Christmas!



**Sarah Nichols (Understudy)** is thrilled to return to AMFA after performing in *Wynken, Blynken, and Nod*. She graduated with a BFA in Theater from ASU Jonesboro and has worked with AMFA, Murry's Dinner Playhouse, and Praeclara.





# imagination openers



## HOW DO YOU KNOW?

Illustrations in storybooks tell us in pictures what the author tells us in words. Look at each picture in *Madeline's Christmas* and talk about the illustrations. What is happening? How do the characters feel? How do you know?

ENGLISH LANGUAGE ARTS STANDARD RC.10.RL EXPLAIN HOW VISUAL IMAGES CLARIFY STORY ELEMENTS.



## TELL IT AGAIN

After reading the story aloud, close the book and retell the story together. Each person can tell one part of the story, or the adult can prompt the retelling and let the child fill in the missing information.

ENGLISH LANGUAGE ARTS STANDARD RC.3.RF RETELL A STORY INCLUDING KEY DETAILS AND INFORMATION



## LET'S PLAY FREEZE FRAME!

Get into small groups. Each group selects one of the scenes or moments from the story to recreate. Talk about the moment with the group and decide what role each person will take in the scene. Make sure you use expressions and body language to convey the characters' feelings and emotions. Each group will have a few minutes to practice "freezing" in their chosen scene. Each group takes a turn and shows their frozen scene and everyone else guesses what scene they are portraying. How do you think playing "freeze frame" can help tell a story?



Check out the book *Madeline's Christmas* from your local library and read it together!

# theatre etiquette



## ARRIVE EARLY

Arriving 15-30 minutes early allows time to locate your tickets, buy concessions, make a final trip to the restroom, and find your seats.



## TURN OFF ELECTRONICS

Lights and sounds from phones and other electronic devices are distracting to other patrons as well as the performers. Photography and videography is not allowed during the performance.



## BE AISLE KIND

Say “pardon me” and “thank you” as you move through the aisle; tuck your belongings under our seat to remove tripping hazards; stand up, when possible, to let others move past you when finding their seats. Be sure to take all your belongings with you when you leave and throw away any rubbish on your way out.



## PLAY YOUR PART

Watch and listen; laugh at funny bits; applaud at the spectacular. Be present and in the moment with the performers.

THEATRE STANDARD K-8: RE.7.2 STUDENTS WILL EXHIBIT APPROPRIATE AUDIENCE BEHAVIOR.



[CLICK HERE FOR A FUN VIDEO ON THEATRE ETIQUETTE](#)

*merci beaucoup!*

for generous in-kind support:

THE ARKANSAS REP  
ARKANSAS STYLE SHOW  
UALR'S DEPARTMENT OF THEATRE ARTS  
ARGENTA CONTEMPORARY THEATRE

# create and share

In the play, the girls gave Miss Clavel a Christmas angel. It was made by the Props Master. In theatre, a Props Master is responsible for finding and creating the props or things the actors use and interact with onstage during the performance. Create your own Christmas angel prop! Gather up some supplies you have around your house like paper, glitter and glue.

## STEP ONE

Get creative! What does your Christmas Angel look like?

## STEP TWO

Snap a snazzy pic. Take a picture of your design to show it off.

## STEP THREE

Post it. Tag us @arkmfa and use the hashtag #MYAMF

VISUAL ARTS STANDARD K-8: CR.1 STUDENTS WILL GENERATE AND CONCEPTUALIZE ARTISTIC IDEAS AND WORK.



# continue the conversation

## COMPARE

Madeline's Christmas is a musical adaptation of Bemelmans' book by the same name. An adaptation means the story was changed a bit. What were some of the things that were different? What were some of the things that remained the same? Why do you think the playwright, Jennifer Kirkeby and the composer Shirley Mier made the changes they made?

## CRITIQUE

In a musical, some of the story is told in song. Why do you think the playwright, Jennifer Kirkeby, and the composer, Shirley Mier, chose to put those moments in the story into song? How did the musical numbers affect the story?

THEATRE STANDARD K-8: RE.7 STUDENTS WILL PERCEIVE AND ANALYZE ARTISTIC WORK.

## CREATE

Read one of Bemelmans's other Madeline stories, *Madeline*, *Madeline's Rescue*, *Madeline and the Bad Hat*, *Madeline and the Gypsies*, or *Madeline in London*, then make your own adaptation of the book! Each person pretends to be a character from the book. Then act out the story. What things will you have to change so the story can be understood?

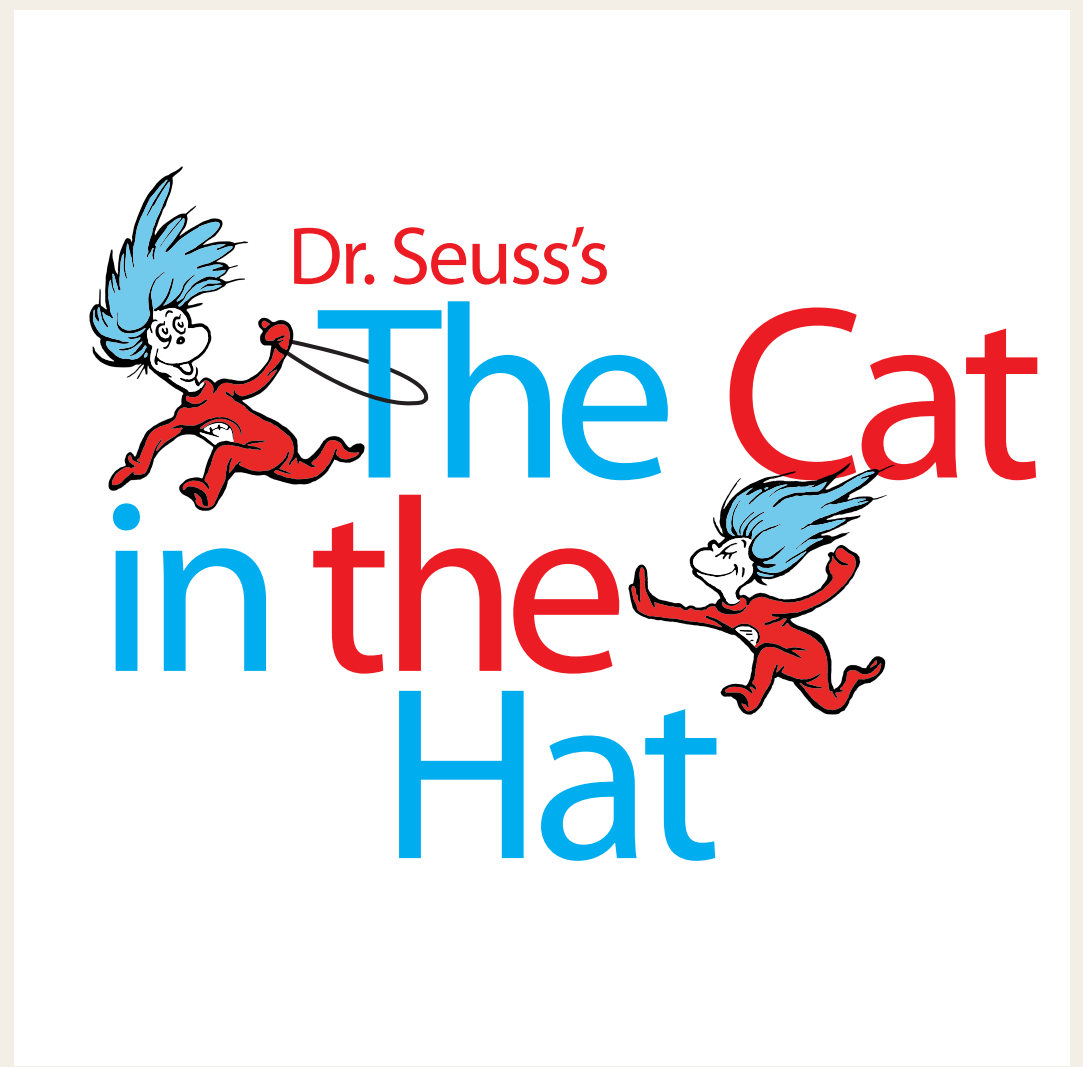
THEATRE STANDARD K-8: CR.1.1 STUDENTS WILL CONCEIVE PLOT, CHARACTERS, DIALOGUE, AND STAGE MOVEMENT THROUGH EXPLORATION.

we can't wait to see  
you again soon!

IF YOU LIKED MADELINE, YOU WILL LOVE...



*AN UNLIKELY HERO*  
January 18-26  
Age: 5 and up  
ON SALE NOW



*THE CAT IN THE HAT*  
March 15-29  
Age: 5 and up  
ON SALE NOW

## SATURDAYS ARE FOR THE FAMILY

Every Saturday is Creative Saturday at AMFA—start your weekend with free art-making fun for all ages, plus special events like these:



**FAMILY FEST:  
SUPERHERO SATURDAY**  
January 18  
10:00 a.m. – 1:00 p.m.



**FAMILY FEST:  
RIVERA'S PARIS**  
February 8  
10:00 a.m. – 1:00 p.m.



**FAMILY FEST:  
ARTIST IN ACTION**  
March 8  
10:00 a.m. – 1:00 p.m.