

# AMFA Foundation Collection Highlights



Elaine de Kooning (New York, New York, 1918 - 1989, Southampton, New York), *Standing Bull*, 1958, oil and acrylic on canvas, 78 1/4 x 108 1/4 in., Arkansas Museum of Fine Arts Foundation Collection: Gift of Robert Mallary. 1973.024.

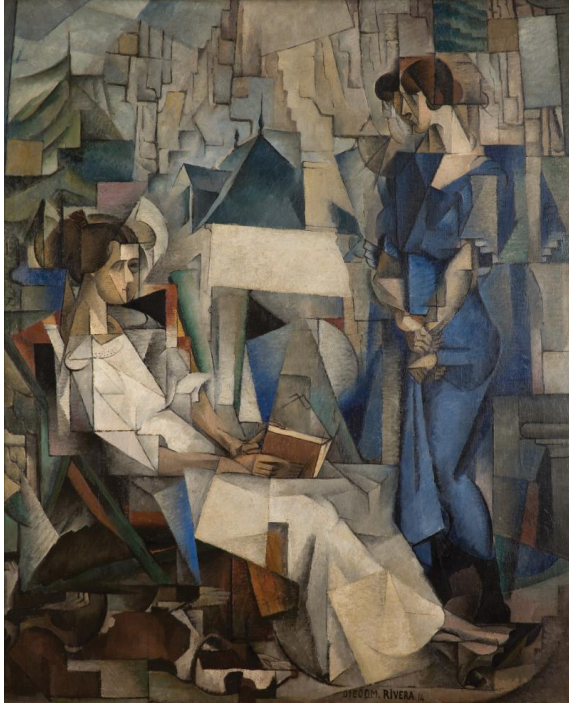


Edgar Hilaire Germain Degas (Paris, France, 1834 - 1917, Paris, France), *Danseuse bleue (Avant la classe, trois danseuses), Blue Dancer (Before Class, Three Dancers)*, 1886 - 1890, pastel on paper, 21 1/4 x 19 3/4 in., On loan from the Jackson T. Stephens Charitable Trust for Art. Photography by Edward C. Robison III.



Andrew Wyeth (Chadds Ford, Pennsylvania, 1917 - 2009, Chadds Ford, Pennsylvania), *Snowflakes*, circa 1966, watercolor on paper, 8 7/8 x 11 7/8 in., Arkansas Museum of Fine Arts Foundation Collection: Purchase, Tabriz Fund and Museum Purchase Plan of the NEA. 1971.009.001.

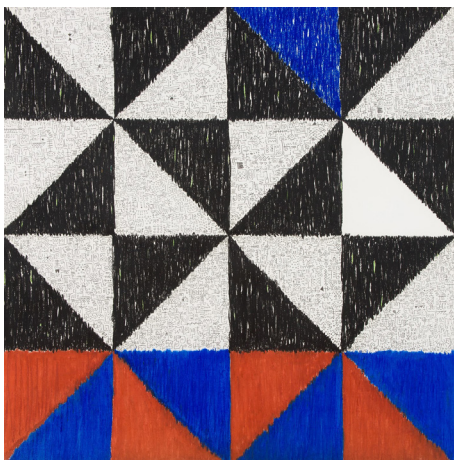
# AMFA Foundation Collection Highlights



Diego Rivera, (Guanajuato, Mexico, 1886 - 1957, Mexico City, Mexico), *Dos Mujeres (Two Women)*, 1914, oil on canvas, 77 3/4 x 63 1/2 in., Arkansas Museum of Fine Arts Foundation Collection: Gift of Abby Rockefeller Mauzé. 1955.010.



Lee Krasner (New York, New York, 1908 - 1984, New York, New York), *Earth #1*, 1969, gouache on heavy wove paper, 18 3/8 x 22 3/4 in., Arkansas Museum of Fine Arts Foundation Collection: Purchase, Tabriz Fund. 1984.017.



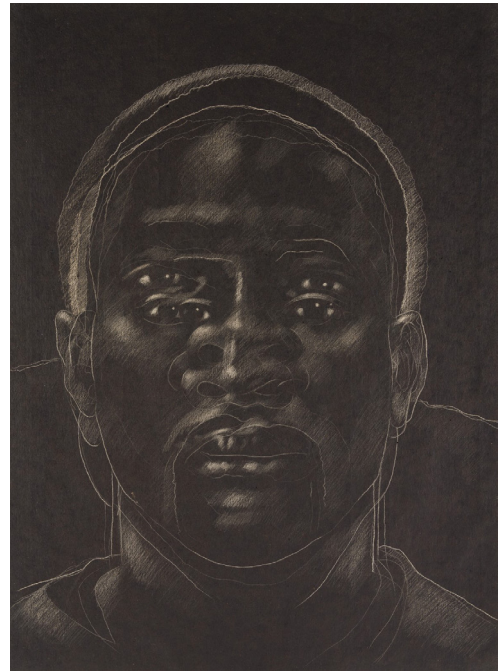
Victor Ekpuk (Eket, Nigeria, 1964 - ), *Composition #2*, 2009, pastel and graphite on paper, 50 x 50 in., Arkansas Museum of Fine Arts Foundation Collection: Purchase, Tabriz Fund. 2014.019.



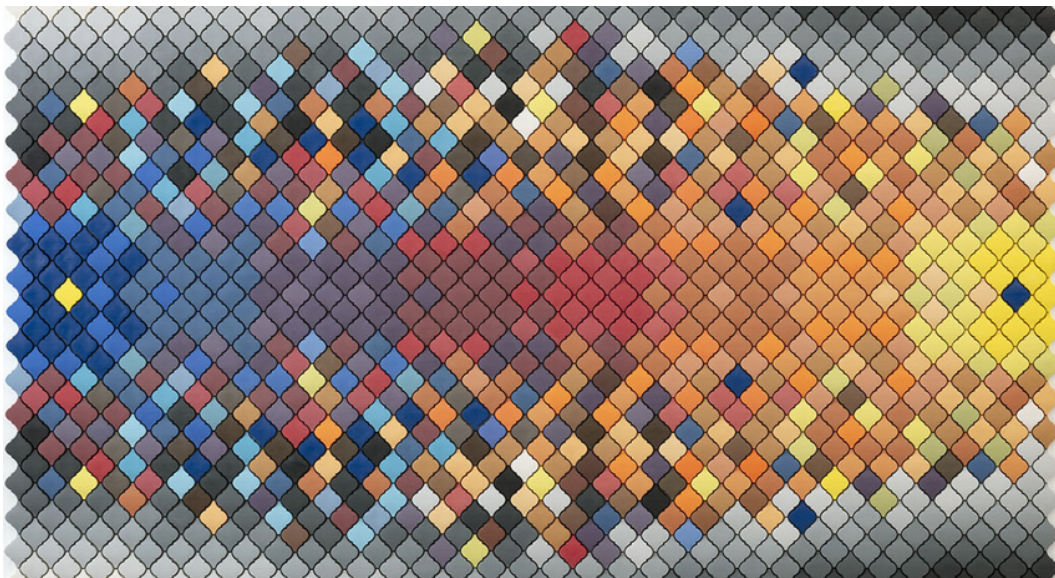
# AMFA Foundation Collection Highlights



Raven Halfmoon (Norman, Oklahoma, 1991 - ),  
*Do You Practice Your Culture?*, 2019, glazed stoneware,  
62 x 20 x 38 in., Arkansas Museum of Fine Arts  
Foundation Collection: Purchase. 2021.007.001.  
Photography by Edward C. Robison III.



Titus Kaphar (Kalamazoo, Michigan, 1976 - ),  
*The Jerome Project (Asphalt and Chalk) VII*,  
2014, white chalk on asphalt paper,  
49 1/8 x 35 1/2 in., Arkansas Museum of Fine Arts  
Foundation Collection: Purchase, Tabriz Fund.  
2015.005. Photography by Edward C. Robison III.



Peter Pincus (Rochester, New York, 1982 - ), *A Familiar Kind of Riddle*, 2018, colored porcelain and luster  
mounted on wood, 52 x 89 x 5 in., Arkansas Museum of Fine Arts Foundation Collection: Purchase,  
Contemporaries Fund. 2021.008.001. Photography by John Polak, courtesy of Ferrin Contemporary.